

SETSOLAR offers top quality flat plate collectors, manufactured in a world class production plant (OEM) using guaranteed and certified materials. Our collectors offer a cost effective yet stylish option for our customers.

With the improved technology in fin design with a wave formation to increase the surface area and a highly absorbent coating, you can be sure that you will be receiving a quality and efficient product.

SETSOLAR's FP150 flat plate collector has the following features:

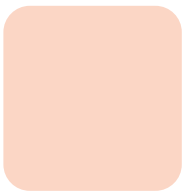
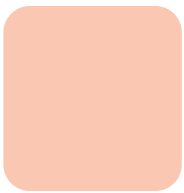
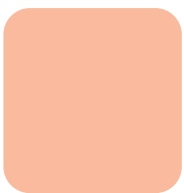
- Aluminium profile
- Low iron tempered solar glass
- EPDM rubber sealing gasket
- Highly absorbent selective coating
- Wave shaped fin for extra surface area

## APPLICATIONS

- Domestic water heating ●
- Commercial water heating ●

## CONTACT US

Unit 8, 98b Bofors Circle, Epping Ind. 2  
Cape Town, South Africa, 7460  
Tel: 021 535 1978 or 021 535 1741  
Admin Fax: 021 534 0233  
Sales Fax: 021 534 5730  
Int: +27 21 535 1794  
[info@setsolar.co.za](mailto:info@setsolar.co.za)  
[www.setsolar.co.za](http://www.setsolar.co.za)

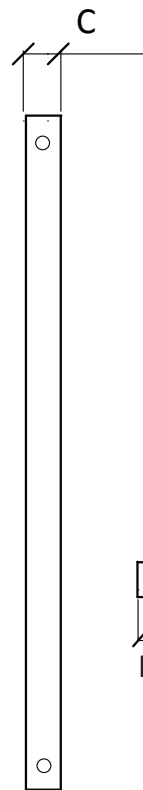
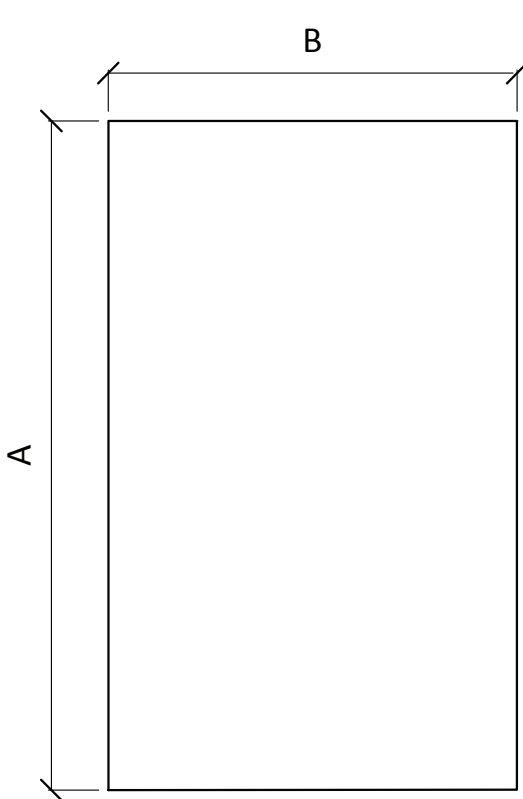


# SETSOLAR FP150

| TECHNICAL DATA                         |                              |
|--|------------------------------|
| Model                                  | FP150                        |
| Recommended heating capacity (l)       | 150                          |
| Overall surface area (m <sup>2</sup> ) | 2.01                         |
| Aperture area (m <sup>2</sup> )        | 1.96                         |
| Insulation                             | 35mm fiber glass cotton      |
| Manifold (mm)                          | 22 x 0,75                    |
| Connection (mm)                        | 22                           |
| Risers (mm)                            | 10 x 0,5                     |
| Riser Coating                          | High absorbent black coating |
| Absorber fin material                  | Wave shaped aluminium        |
| Riser welding                          | Non welding technique        |
| Dimensions (mm)                        | L2000xW1000xH80              |
| Weight (kg)                            | 32                           |
| Glass                                  | 3.2mm Low Iron tempered      |
| Glass Seal                             | EPDM Gasket                  |
| Back Plate                             | Galvanized Steel             |
| Profile                                | Coated aluminium             |
| Max. stagnation temperature            | 250 °C                       |
| Max. operating pressure (Mpa)          | 1.2                          |
| Rated working pressure (Mpa)           | 0.8                          |
| Recommended tilt angle                 | 15° to 75°                   |
| Warranty (yrs)                         | 5                            |



SETSOLAR recommend that the user flush the system with a lime calcium remover every 6 months. To avoid sediment build up in the copper pipes due to poor water quality in certain locations.



## DIMENSIONS

|   |      |
|---|------|
| A | 2000 |
| B | 1000 |
| C | 80   |
| D | 75   |
| E | 850  |

Dimensions in mm  
(tolerance +5mm)

